




# Certificate of Analysis

## Compliance Test

<b>Client Information:</b> <b>Mary Jones</b> 1522 Western Ave, STE 24150 Seattle, Washington 98101	<b>Manufacturing Facility:</b> Life is Brewing 6790 John Bragg Hwy Murfreesboro, TN 37127 Food Permit #: TNHDC241394 Production Date: 2025-11-21	<b>Batch Data:</b> Batch # MJ0020C10 Batch Date: 2025-11-21 Extracted From: Hemp	<b>Order Details:</b> Test Reg State: National	<b>Food Permits:</b> State: MN - #MI-S-20044
---	---	---	---	---

<b>Order #</b> MAR251124-020001 <b>Order Date:</b> 2025-11-24 <b>Sample #</b> AAHF933	<b>Sampling Date:</b> 2025-11-26 <b>Lab Batch Date:</b> 2025-11-26 <b>Orig. Completion Date:</b> 2025-12-10	<b>Volume:</b> 355 ml	<b>Net Weight per Serving:</b> 177.5 ml <b>Servings Per Package:</b> 2
--	---	-----------------------	---

**Statement of Amendment: Updated Manufacturing Facility**



Product Image

<b>Potency Passed</b>	<b>Staphylococcus Aureus Passed</b>	<b>HHCP Tested</b>	<b>Terpenes Passed</b>	<b>Pesticides Passed</b>
<b>Heavy Metals Passed</b>	<b>Microbiology Petrifilm Passed</b>	<b>Mycotoxins Passed</b>	<b>Residual Solvents Passed</b>	<b>Moisture Passed</b>
<b>Water Activity Passed</b>	<b>Pathogenic Microbiology Passed</b>	<b>Listeria Monocytogenes Passed</b>	<b>Microbiology Tested</b>	<b>Microbiology Petrifilm Passed</b>
<b>Filtration Passed</b>	<b>Filtration Passed</b>	<b>Filtration Passed</b>	<b>Filtration Passed</b>	<b>Filtration Passed</b>

### Potency Summary

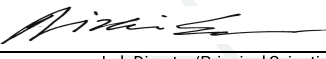
<b>Total HHC</b> per Serving per Package	<b>&lt;LOQ</b> 0.00 mg 0.00 mg	<b>Delta 9 THC</b> per Serving per Package	<b>0.00254%</b> 4.51 mg 9.02 mg
<b>Total Active CBD</b> per Serving per Package	<b>&lt;LOQ</b> 0.00 mg 0.00 mg	<b>Total CBG</b> per Serving per Package	<b>&lt;LOQ</b> 0.00 mg 0.00 mg
<b>Total CBN</b> per Serving per Package	<b>&lt;LOQ</b> 0.00 mg 0.00 mg	<b>Total Cannabinoids</b> per Serving per Package	<b>0.00254%</b> 4.51 mg 9.02 mg
<b>Total Active THC (LA)</b> per Serving per Package	<b>0.00254%</b> 4.51 mg 9.02 mg	<b>Total Active THC</b> per Serving per Package	<b>0.00254%</b> 4.51 mg 9.02 mg
<b>Total DELTA-9-THC</b> per Serving per Package	<b>0.00254%</b> 4.51 mg 9.02 mg		

### Terpenes Summary

Analyte	Result (mg/g)	(%)
(R)-(+)-Limonene	0.046	0.005%
<b>Total Terpenes: 0.005%</b>		

Detailed Terpenes Analysis is on the following page

\* Summary Results determined from two distinct Potency Tests - National Panel Potency + Potency (GA) LCUV

  
Aixia Sun Lab Director/Principal Scientist  
D.H.Sc., M.Sc., B.Sc., MT (AAB)



Definitions and Abbreviations used in this report: Definitions and Abbreviations used in this report: Total CBD = CBD + (CBD-A \* 0.877), Total CBDV = CBDV + (CBDVA \* 0.867), Total THC = (THCA-A \* 0.877) + Delta 9 THC, Total THCV = THCV + (THCVA \* 0.87), CBG Total = (CBGA \* 0.878) + CBG, CBN Total = (CBNA \* 0.876) + CBN, Total CBC = CBC + (CBCA \* 0.877), Total Cannabinoids = Total percentage of cannabinoids within the sample. (mg/ml) = Milligrams per Milliliter, LOQ = Limit of Quantitation, LOD = Limit of Detection, Dilution = Dilution Factor(ppb) = Parts per Billion, (%) = Percent, (cfu/g) = Colony Forming Unit per Gram, (cfu/g) = Colony Forming Unit per Gram, LOD = Limit of Detection, (µg/g) = Microgram per Gram(ppm) = Parts per Million, (ppm) = (µg/g), (aw) = Water Activity, (mg/Kg) = Milligram per Kilogram Pesticides indicators: 1=FL LOD/LOQ/AL; 2= CO LOD/LOQ/AL; 3 = CO LOD/ACS CO LOQ Revised report- see statement of amendment above.

This report shall not be reproduced, without written approval, from ACS Laboratory. The results of this report relate only to the material or product analyzed. Test results are confidential unless explicitly waived otherwise. ACS Laboratory is accredited to the ISO/IEC 17025:2017 Standard. The tests and/or calibrations marked with an "\*" are not ISO/IEC 17025:2017 accredited test results. This facility meets the human health and food safety sanitation requirements of the Kentucky Cabinet for Health and Family Services as documented by KYCHFS.



## Certificate of Analysis

### Compliance Test

<b>Client Information:</b> <b>Mary Jones</b> 1522 Western Ave, STE 24150 Seattle, Washington 98101	<b>Manufacturing Facility:</b> Life is Brewing 6790 John Bragg Hwy Murfreesboro, TN 37127 Food Permit #: TNHDC241394 Production Date: 2025-11-21	<b>Batch Data:</b> Batch # MJ0020C10 Batch Date: 2025-11-21 Extracted From: Hemp	<b>Order Details:</b> Test Reg State: National	<b>Food Permits:</b> State: MN - #MI-S-20044
---	---	---	---	---

<b>Order #</b> MAR251124-020001 <b>Order Date:</b> 2025-11-24 <b>Sample #</b> AAHF933	<b>Sampling Date:</b> 2025-11-26 <b>Lab Batch Date:</b> 2025-11-26 <b>Orig. Completion Date:</b> 2025-12-10	<b>Volume:</b> 355 ml <b>Net Weight per Serving:</b> 177.5 ml <b>Servings Per Package:</b> 2
--	---	--

**National Panel Potency + Potency (GA) LCUV**
Passed
SOP13.030 (LCMS)

Specimen Weight: 20000.000 mg

Analyte	Dilution (1:n)	LOD (mg/g)	LOQ (%)	Result (µg/ml)	(%)	Per Serving (mg)	Per Package (mg)
Delta-9 THC	8.000	0.000013	0.015	25.4	0.00254		4.51
Abnormal CBD	8.000	0.015	0.002	<LOQ	<LOQ		0.00
CBC	8.000	2.76E-05	0.00075	<LOQ	<LOQ		0.00
CBCA	8.000	0.000107	0.002	<LOQ	<LOQ		0.00
CBD	8.000	0.0000540	0.015	<LOQ	<LOQ		0.00
CBDA	8.000	0.00001	0.015	<LOQ	<LOQ		0.00
CBDV	8.000	.0000614	0.002	<LOQ	<LOQ		0.00
CBDVA	8.000	0.000014	0.002	<LOQ	<LOQ		0.00
CBE	8.000	.0000483	0.002	<LOQ	<LOQ		0.00
CBG	8.000	0.000248	0.015	<LOQ	<LOQ		0.00
CBGA	8.000	0.00008	0.015	<LOQ	<LOQ		0.00
CBL	8.000	.0000919	0.002	<LOQ	<LOQ		0.00
CBLA	8.000	0.015	0.001	<LOQ	<LOQ		0.00
CBN	8.000	0.000014	0.015	<LOQ	<LOQ		0.00
CBNA	8.000	0.000014	0.002	<LOQ	<LOQ		0.00
CBT	8.000	0.000325	0.004	<LOQ	<LOQ		0.00
Delta-8 THC	8.000	0.000026	0.015	<LOQ	<LOQ		0.00
Delta-8 THC-O Acetate	8.000	0.000027	0.002	<LOQ	<LOQ		0.00
Delta-8 THCV	8.000	0.0015	0.002	<LOQ	<LOQ		0.00
Delta-9 THC-O Acetate	8.000	0.000077	0.03	<LOQ	<LOQ		0.00
Delta6a10a-THC	1.000	0.0015	0.001	<LOQ	<LOQ		0.00
Delta8-THCA-A	8.000	0.015	0.001	<LOQ	<LOQ		0.00
Delta8-THCP	8.000	0.0015	0.002	<LOQ	<LOQ		0.00
Delta9-THCP	8.000	0.0012	0.002	<LOQ	<LOQ		0.00
Exo-THC	8.000	0.00023	0.015	<LOQ	<LOQ		0.00
THCA-A	8.000	0.000032	0.015	<LOQ	<LOQ		0.00
THCB	8.000	0.00195	0.002	<LOQ	<LOQ		0.00
THCH	8.000	0.00195	0.002	<LOQ	<LOQ		0.00
THCV	8.000	.0000276	0.002	<LOQ	<LOQ		0.00
Delta-10 THC	8.000	0.000003	0.015	<LOQ	<LOQ		0.00
Total Active THC	8.000			25.4	0.00254		4.51
Total Active CBD	8.000			<LOQ	<LOQ		0.00

Aixa Sun Lab Director/Principal Scientist  
D.H.Sc., M.Sc., B.Sc., MT (AAB)



Definitions are found on page 1

This report shall not be reproduced, without written approval, from ACS Laboratory. The results of this report relate only to the material or product analyzed. Test results are confidential unless explicitly waived otherwise. ACS Laboratory is accredited to the ISO/IEC 17025:2017 Standard. The tests and/or calibrations marked with an "\*" are not ISO/IEC 17025:2017 accredited test results. This facility meets the human health and food safety sanitation requirements of the Kentucky Cabinet for Health and Family Services as documented by KYCHFS.





## Certificate of Analysis Compliance Test

**Client Information:**

**Mary Jones**  
1522 Western Ave, STE  
24150  
Seattle, Washington  
98101

**Manufacturing Facility:**

Life is Brewing  
6790 John Bragg Hwy  
Murfreesboro, TN 37127  
Food Permit #: TNHDC241394  
Production Date: 2025-11-21

**Batch Data:**

Batch # MJ0020C10  
Batch Date: 2025-11-21  
Extracted From: Hemp

**Order Details:**

Test Reg State: National

**Food Permits:**

State: MN - #MI-S-20044

**Order #**

MAR251124-020001  
Order Date: 2025-11-24  
Sample # AAHF933

**Sampling Date:** 2025-11-26

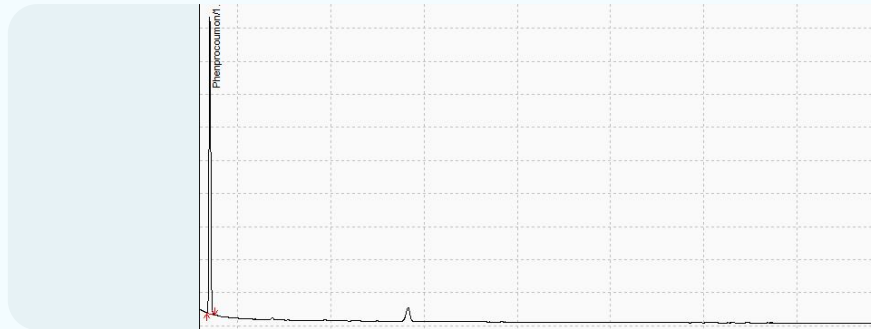
Lab Batch Date: 2025-11-26  
Orig. Completion Date: 2025-12-10

Volume: 355 ml

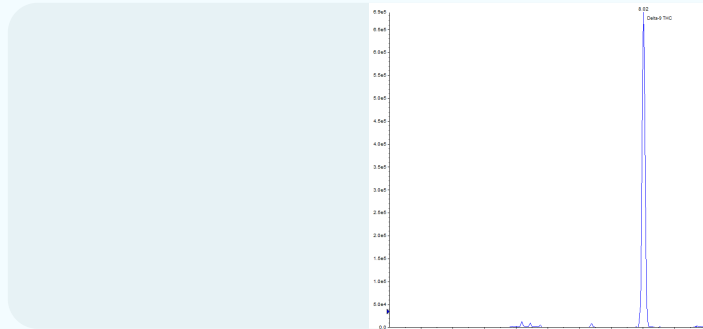
**Net Weight per Serving:**

177.5 ml  
Servings Per Package:  
2

National Panel Potency



National Panel Potency



*Aixia Sun*

Aixia Sun Lab Director/Principal Scientist  
D.H.Sc., M.Sc., B.Sc., MT (AAB)



Definitions are found on page 1

This report shall not be reproduced, without written approval, from ACS Laboratory. The results of this report relate only to the material or product analyzed. Test results are confidential unless explicitly waived otherwise. ACS Laboratory is accredited to the ISO/IEC 17025:2017 Standard. The tests and/or calibrations marked with an "\*" are not ISO/IEC 17025:2017 accredited test results. This facility meets the human health and food safety sanitation requirements of the Kentucky Cabinet for Health and Family Services as documented by KYCHFS.





## Certificate of Analysis

### Compliance Test

<b>Client Information:</b> <b>Mary Jones</b> 1522 Western Ave, STE 24150 Seattle, Washington 98101	<b>Manufacturing Facility:</b> Life is Brewing 6790 John Bragg Hwy Murfreesboro, TN 37127 Food Permit #: TNHDC241394 Production Date: 2025-11-21	<b>Batch Data:</b> Batch # MJ0020C10 Batch Date: 2025-11-21 Extracted From: Hemp	<b>Order Details:</b> Test Reg State: National	<b>Food Permits:</b> State: MN - #MI-S-20044
---	---	---	---	---

<b>Order #</b> MAR251124-020001 <b>Order Date:</b> 2025-11-24 <b>Sample #</b> AAHF933	<b>Sampling Date:</b> 2025-11-26 <b>Lab Batch Date:</b> 2025-11-26 <b>Orig. Completion Date:</b> 2025-12-10	<b>Volume:</b> 355 ml	<b>Net Weight per Serving:</b> 177.5 ml <b>Servings Per Package:</b> 2
--	---	-----------------------	---

<b>National Panel Water Activity</b> Specimen Weight: 0.500 g Dilution Factor: 1.000 Analyte Water Activity	<b style="color: green;">Passed</b> SOP13.016 (Water Activity Analyzer)				
	<table border="1" style="width: 100%; border-collapse: collapse;"> <thead> <tr> <th style="width: 60%;">Action Level (aw)</th> <th style="width: 40%;">Result (aw)</th> </tr> </thead> <tbody> <tr> <td style="text-align: center;">0.85</td> <td style="text-align: center; color: green;">NA</td> </tr> </tbody> </table>	Action Level (aw)	Result (aw)	0.85	NA
Action Level (aw)	Result (aw)				
0.85	NA				

<b>National Panel Listeria Monocytogenes</b> Specimen Weight: 1007.600 mg Dilution Factor: 1.000 Analyte Listeria Monocytogenes	<b style="color: green;">Passed</b> SOP13.032 (qPCR)		
	<table border="1" style="width: 100%; border-collapse: collapse;"> <thead> <tr> <th style="width: 80%;">Result</th> </tr> </thead> <tbody> <tr> <td style="text-align: center;">Absence</td> </tr> </tbody> </table>	Result	Absence
Result			
Absence			

<b>National Panel Bile Tolerant Gram-Negative Bacteria</b> Specimen Weight: 996.400 mg Dilution Factor: 1.000 Analyte Bile tolerant gram-negative bacteria	<b style="color: green;">Passed</b> SOP13.003 (Petrifilm)						
	<table border="1" style="width: 100%; border-collapse: collapse;"> <thead> <tr> <th style="width: 30%;">LOQ (cfu/g)</th> <th style="width: 20%;">Action Level (cfu/g)</th> <th style="width: 50%;">Result (cfu/g)</th> </tr> </thead> <tbody> <tr> <td style="text-align: center;">100</td> <td style="text-align: center;">100000</td> <td style="text-align: center; color: green;">&lt;100</td> </tr> </tbody> </table>	LOQ (cfu/g)	Action Level (cfu/g)	Result (cfu/g)	100	100000	<100
LOQ (cfu/g)	Action Level (cfu/g)	Result (cfu/g)					
100	100000	<100					

<b>National Panel Pathogenic Microbiology SAE (MicroArray)</b> Specimen Weight: 1011.800 mg Dilution Factor: 1.000 Analyte Aspergillus (Flavus, Fumigatus, Niger, Terreus) Salmonella	<b style="color: green;">Passed</b> SOP13.019 (Micro Array)															
	<table border="1" style="width: 100%; border-collapse: collapse;"> <thead> <tr> <th style="width: 20%;">Action Level (cfu/g)</th> <th style="width: 20%;">Result (cfu/g)</th> <th style="width: 20%;">Analyte</th> <th style="width: 20%;">Action Level (cfu/g)</th> <th style="width: 20%;">Result (cfu/g)</th> </tr> </thead> <tbody> <tr> <td style="text-align: center;">1</td> <td style="text-align: center; color: green;">Absence in 1g</td> <td style="text-align: center;">STEC E. Coli</td> <td style="text-align: center;">1</td> <td style="text-align: center; color: green;">Absence in 1g</td> </tr> <tr> <td style="text-align: center;">1</td> <td style="text-align: center; color: green;">Absence in 1g</td> <td></td> <td></td> <td></td> </tr> </tbody> </table>	Action Level (cfu/g)	Result (cfu/g)	Analyte	Action Level (cfu/g)	Result (cfu/g)	1	Absence in 1g	STEC E. Coli	1	Absence in 1g	1	Absence in 1g			
Action Level (cfu/g)	Result (cfu/g)	Analyte	Action Level (cfu/g)	Result (cfu/g)												
1	Absence in 1g	STEC E. Coli	1	Absence in 1g												
1	Absence in 1g															

Aixia Sun Lab Director/Principal Scientist  
 D.H.Sc., M.Sc., B.Sc., MT (AAB)



**Definitions are found on page 1**  
 This report shall not be reproduced, without written approval, from ACS Laboratory. The results of this report relate only to the material or product analyzed. Test results are confidential unless explicitly waived otherwise. ACS Laboratory is accredited to the ISO/IEC 17025:2017 Standard. The tests and/or calibrations marked with an "\*" are not ISO/IEC 17025:2017 accredited test results. This facility meets the human health and food safety sanitation requirements of the Kentucky Cabinet for Health and Family Services as documented by KYCHFS.



## Certificate of Analysis

### Compliance Test

<b>Client Information:</b> <b>Mary Jones</b> 1522 Western Ave, STE 24150 Seattle, Washington 98101	<b>Manufacturing Facility:</b> Life is Brewing 6790 John Bragg Hwy Murfreesboro, TN 37127 Food Permit #: TNHDC241394 Production Date: 2025-11-21	<b>Batch Data:</b> Batch # MJ0020C10 Batch Date: 2025-11-21 Extracted From: Hemp	<b>Order Details:</b> Test Reg State: National	<b>Food Permits:</b> State: MN - #MI-S-20044
---	---	---	---	---

<b>Order #</b> MAR251124-020001 <b>Order Date:</b> 2025-11-24 <b>Sample #</b> AAHF933	<b>Sampling Date:</b> 2025-11-26 <b>Lab Batch Date:</b> 2025-11-26 <b>Orig. Completion Date:</b> 2025-12-10	<b>Volume:</b> 355 ml	<b>Net Weight per Serving:</b> 177.5 ml <b>Servings Per Package:</b> 2
--	---	-----------------------	---

	<b>Microbiology AC TYM BTGN plating - (GA)</b> Specimen Weight: 996.400 mg	<b>Tested</b> SOP13.003 (Petrifilm)					
Dilution Factor: 1.000							
Analyte	LOQ (cfu/g)	Action Level (cfu/g)	Result (cfu/g)	Analyte	LOQ (cfu/g)	Action Level (cfu/g)	Result (cfu/g)
Bile tolerant gram-negative bacteria	100	1000	<100	Total Yeast/Mold	1000	10000	<1000
Total Aerobic Count	1000	100000	<1000				

	<b>Filth and Foreign Material</b> Specimen Weight: N/A Dilution Factor: 1.000	<b>Passed</b> SOP13.020 (Electronic Balance)			
Analyte	Action Level (%)	Result (%)	Analyte	Action Level (%)	Result (%)
Covered Area	10	0.00	Weight %	1	0.00
Feces	0.5	0.00			

	<b>National Panel Microbiology (Petrifilm)</b> Specimen Weight: 996.400 mg	<b>Passed</b> SOP13.003 (Petrifilm)					
Dilution Factor: 1.000							
Analyte	LOQ (cfu/g)	Action Level (cfu/g)	Result (cfu/g)	Analyte	LOQ (cfu/g)	Action Level (cfu/g)	Result (cfu/g)
Total Aerobic Count	1000	100000	<1000	Total Enterobacteriaceae	100	1000	<100
Total Coliform	100	1000	<100	Total Yeast/Mold	100	10000	<100

Aixia Sun Lab Director/Principal Scientist  
 D.H.Sc., M.Sc., B.Sc., MT (AAB)

**Definitions are found on page 1**

*This report shall not be reproduced, without written approval, from ACS Laboratory. The results of this report relate only to the material or product analyzed. Test results are confidential unless explicitly waived otherwise. ACS Laboratory is accredited to the ISO/IEC 17025:2017 Standard. The tests and/or calibrations marked with an "\*" are not ISO/IEC 17025:2017 accredited test results. This facility meets the human health and food safety sanitation requirements of the Kentucky Cabinet for Health and Family Services as documented by KYCHFS.*





# Certificate of Analysis

## Compliance Test

<b>Client Information:</b> <b>Mary Jones</b> 1522 Western Ave, STE 24150 Seattle, Washington 98101	<b>Manufacturing Facility:</b> Life is Brewing 6790 John Bragg Hwy Murfreesboro, TN 37127 Food Permit #: TNHDC241394 Production Date: 2025-11-21	<b>Batch Data:</b> Batch # MJ0020C10 Batch Date: 2025-11-21 Extracted From: Hemp	<b>Order Details:</b> Test Reg State: National	<b>Food Permits:</b> State: MN - #MI-S-20044
---	---	---	---	---

<b>Order #</b> MAR251124-020001 <b>Order Date:</b> 2025-11-24 <b>Sample #</b> AAHF933	<b>Sampling Date:</b> 2025-11-26 <b>Lab Batch Date:</b> 2025-11-26 <b>Orig. Completion Date:</b> 2025-12-10	<b>Volume:</b> 355 ml	<b>Net Weight per Serving:</b> 177.5 ml <b>Servings Per Package:</b> 2
--	---	-----------------------	---

**National Panel Mycotoxins** **Passed**  
SOP13.059 (LCMS)

Specimen Weight: 593.000 mg

Dilution Factor: 2.530

Analyte	LOD (ppb)	LOQ (ppb)	Action Level (ppb)	Result	Analyte	LOD (ppb)	LOQ (ppb)	Action Level (ppb)	Result
Aflatoxin B1	0.093	2.5	5	<LOQ	Aflatoxin G2	0.627	2.5	5	<LOQ
Aflatoxin B2	0.121	2.5	5	<LOQ	Aflatoxin Total		2.5	20	<LOQ
Aflatoxin G1	0.191	2.5	5	<LOQ	Ochratoxin A	0.638	3.5	20	<LOQ

**HHCP - Multi State** **Tested**  
SOP13.050 (LCMS)

Specimen Weight: 20000.000 mg

Dilution Factor: 40.000

Analyte	LOD (%)	LOQ (%)	Result (µg/ml)	(%)	Analyte	LOD (%)	LOQ (%)	Result (µg/ml)	(%)
(9R)-HHC	0.000	0.00075	<LOQ	<LOQ	CBC	0.000	0.00075	<LOQ	<LOQ
(9S)-HHC	0.000	0.00075	<LOQ	<LOQ	Delta-8 THC methyl ether	0.000	0.00075	<LOQ	<LOQ
(±)-9β-hydroxy-HHC	0.000	0.00075	<LOQ	<LOQ	Delta-9 THC methyl ether	0.000	0.00075	<LOQ	<LOQ
1(R)-H4-CBD	0.000	0.0015	<LOQ	<LOQ	H2-CBD	0.000	0.00075	<LOQ	<LOQ
1(S)-H4-CBD	0.000	0.0015	<LOQ	<LOQ	H4-CBD	0.002	0.15	<LOQ	<LOQ
9(R)-HHCP	0.000	0.00075	<LOQ	<LOQ	Total HHC		0.00075	<LOQ	<LOQ
9(S)-HHCP	0.000	0.00075	<LOQ	<LOQ					

**National Panel Heavy Metals** **Passed**  
SOP13.055 (ICP-MS)

Specimen Weight: 251.100 mg

Dilution Factor: 199.124

Analyte	LOD (ppb)	LOQ (ppb)	Action Level (ppb)	Result	Analyte	LOD (ppb)	LOQ (ppb)	Action Level (ppb)	Result
Antimony (Sb)	0.032	1000	2000	<LOQ	Molybdenum (Mo)	0.009	500	1000	<LOQ
Arsenic (As)	0.014	100	200	<LOQ	Nickel (Ni)	0.352	250	500	<LOQ
Barium (Ba)	0.056	15000	30000	<LOQ	Osmium (Os)	0.003	50	100	<LOQ
Cadmium (Cd)	0.002	100	200	<LOQ	Palladium (Pd)	0.017	50	100	<LOQ
Chromium (Cr)	0.052	150	300	<LOQ	Platinum (Pt)	0.008	50	100	<LOQ
Cobalt (Co)	0.003	150	300	<LOQ	Rhodium (Rh)	0.003	50	100	<LOQ
Copper (Cu)	0.059	1500	3000	<LOQ	Ruthenium (Ru)	0.002	50	100	<LOQ
Gold (Au)	0.021	50	100	<LOQ	Selenium (Se)	4.631	6500	13000	<LOQ
Iridium (Ir)	0.001	50	100	<LOQ	Silver (Ag)	0.005	350	700	<LOQ
Lead (Pb)	0.006	250	500	<LOQ	Thallium (Tl)	0.006	400	800	<LOQ
Lithium (Li)	0.301	1250	2500	<LOQ	Tin (Sn)	0.047	3000	6000	<LOQ
Mercury (Hg)	0.014	50	200	<LOQ	Vanadium (V)	0.038	50	100	<LOQ

*Aixia Sun*  
Aixia Sun Lab Director/Principal Scientist  
D.H.Sc., M.Sc., B.Sc., MT (AAB)

**Definitions are found on page 1**

This report shall not be reproduced, without written approval, from ACS Laboratory. The results of this report relate only to the material or product analyzed. Test results are confidential unless explicitly waived otherwise. ACS Laboratory is accredited to the ISO/IEC 17025:2017 Standard. The tests and/or calibrations marked with an "\*" are not ISO/IEC 17025:2017 accredited test results. This facility meets the human health and food safety sanitation requirements of the Kentucky Cabinet for Health and Family Services as documented by KYCHFS.





## Certificate of Analysis

### Compliance Test

<b>Client Information:</b> <b>Mary Jones</b> 1522 Western Ave, STE 24150 Seattle, Washington 98101	<b>Manufacturing Facility:</b> Life is Brewing 6790 John Bragg Hwy Murfreesboro, TN 37127 Food Permit #: TNHDC241394 Production Date: 2025-11-21	<b>Batch Data:</b> Batch # MJ0020C10 Batch Date: 2025-11-21 Extracted From: Hemp	<b>Order Details:</b> Test Reg State: National	<b>Food Permits:</b> State: MN - #MI-S-20044
---	---	---	---	---

<b>Order #</b> MAR251124-020001 <b>Order Date:</b> 2025-11-24 <b>Sample #</b> AAHF933	<b>Sampling Date:</b> 2025-11-26 <b>Lab Batch Date:</b> 2025-11-26 <b>Orig. Completion Date:</b> 2025-12-10	<b>Volume:</b> 355 ml	<b>Net Weight per Serving:</b> 177.5 ml <b>Servings Per Package:</b> 2
--	---	-----------------------	---

National Panel Residual Solvents				Passed			
Specimen Weight: 50.550 mg				SOP13.056,SOP13.039 (GCMS- (HS),GCMS-HS)			
Dilution Factor: 1.000							
Analyte	LOQ (ppm)	Action Level (ppm)	Result	Analyte	LOQ (ppm)	Action Level (ppm)	Result
1,1-Dichloroethene	0.607	2	<LOQ	Ethyl formate	4	1000	<LOQ
1,2 Dimethoxyethane	0.025	5	<LOQ	Ethylbenzene	0.025	2170	<LOQ
1,2-Dichloroethane	0.025	2	<LOQ	Ethylene glycol	0.025	50	<LOQ
1,4 Dioxane	0.025	50	<LOQ	Ethylene Oxide	0.025	1	<LOQ
1-Butanol	0.025	5000	<LOQ	Formic acid	4	1000	<LOQ
1-Pentanol	0.025	5000	<LOQ	Heptane	0.025	500	<LOQ
1-Propanol	0.025	5000	<LOQ	Hexane	0.025	10	<LOQ
2-Butanol	0.025	800	<LOQ	Isobutyl acetate	4	1000	<LOQ
2-Butanone	0.025	5000	<LOQ	Isopropyl acetate	0.025	5000	<LOQ
2-Ethoxyethanol	0.025	50	<LOQ	Isopropyl alcohol	0.025	500	<LOQ
2-Methyl-1-propanol	4	1000	<LOQ	Methanol	0.025	250	<LOQ
2-methylbutane	0.025	5000	<LOQ	Methyl acetate	4	1000	<LOQ
3-methyl-1-butanol	4	1000	<LOQ	Methylene chloride	0.025	1	<LOQ
Acetic acid	4	1000	<LOQ	N,N-dimethylacetamide	0.025	50	<LOQ
Acetone	0.025	500	<LOQ	N,N-dimethylformamide	0.025	50	<LOQ
Acetonitrile	0.025	50	<LOQ	Pentane	0.025	500	<LOQ
Anisole	4	1000	<LOQ	Propane	0.025	500	<LOQ
Benzene	0.025	1	<LOQ	Propyl acetate	4	1000	<LOQ
Butanes	0.025	800	<LOQ	Pyridine	0.025	50	<LOQ
Butyl acetate	4	1000	<LOQ	tert-Butyl methyl ether	4	1000	<LOQ
Chlorobenzene	0.28	50	<LOQ	Tetrahydrofuran	0.025	50	<LOQ
Chloroform	0.025	1	<LOQ	Tetramethylene sulfone	0.025	160	<LOQ
Cumene	0.025	50	<LOQ	Toluene	0.025	1	<LOQ
Cyclohexane	0.025	3880	<LOQ	Total Xylenes	0.025	3	<LOQ
Dimethyl sulfoxide	0.025	5000	<LOQ	Trichloroethylene	0.025	1	<LOQ
Ethanol	0.025	2500	491	Triethylamine	4	1000	<LOQ
Ethyl Acetate	0.025	400	<LOQ	Xylenes(o)	0.025	1	<LOQ
Ethyl Ether	0.025	500	<LOQ	Xylenes(p/m)	0.025	1	<LOQ

Aixia Sun Lab Director/Principal Scientist  
D.H.Sc., M.Sc., B.Sc., MT (AAB)



Definitions are found on page 1

This report shall not be reproduced, without written approval, from ACS Laboratory. The results of this report relate only to the material or product analyzed. Test results are confidential unless explicitly waived otherwise. ACS Laboratory is accredited to the ISO/IEC 17025:2017 Standard. The tests and/or calibrations marked with an "\*" are not ISO/IEC 17025:2017 accredited test results. This facility meets the human health and food safety sanitation requirements of the Kentucky Cabinet for Health and Family Services as documented by KYCHFS.





# Certificate of Analysis

## Compliance Test

**Client Information:**

**Mary Jones**  
1522 Western Ave, STE  
24150  
Seattle, Washington  
98101

**Manufacturing Facility:**

Life is Brewing  
6790 John Bragg Hwy  
Murfreesboro, TN 37127  
Food Permit #: TNHDC241394  
Production Date: 2025-11-21

**Batch Data:**

Batch # MJ0020C10  
Batch Date: 2025-11-21  
Extracted From: Hemp

**Order Details:**

Test Reg State: National

**Food Permits:**

State: MN - #MI-S-20044

**Order #**

MAR251124-020001  
Order Date: 2025-11-24  
Sample # AAHF933

**Sampling Date:** 2025-11-26

Lab Batch Date: 2025-11-26  
Orig. Completion Date: 2025-12-10

Volume: 355 ml

**Net Weight per Serving:**

177.5 ml  
Servings Per Package:  
2

**National Panel Pesticides**  
Specimen Weight: 593.000 mg

**Passed**  
SOP13.059 (LCMS)

Dilution Factor: 2.530

Analyte	LOD (ppb)	LOQ (ppb)	Action Level (ppb)	Result (ppb)	Analyte	LOD (ppb)	LOQ (ppb)	Action Level (ppb)	Result (ppb)	Analyte	LOD (ppb)	LOQ (ppb)	Action Level (ppb)	Result (ppb)
Abamectin <sup>1</sup>	0.435	9	300	<LOQ	Hexythiazox <sup>1</sup>	0.045	9.6	2000	<LOQ	Cyantraniliprole <sup>2</sup>	0.006004	9.6	10	<LOQ
Acephate <sup>1</sup>	0.467	9.6	3000	<LOQ	Imazalil <sup>1</sup>	0.639	9.6	100	<LOQ	Cyprodinil <sup>2</sup>	0.001141	9.6	10	<LOQ
Acequinocyl <sup>1</sup>	0.801	9.6	2000	<LOQ	Imidacloprid <sup>1</sup>	0.159	9.6	3000	<LOQ	Dinotefuran <sup>2</sup>	0.236975	9.6	50	<LOQ
Acetamiprid <sup>1</sup>	0.080	9.6	3000	<LOQ	Kresoxim Methyl <sup>1</sup>	0.268	9.6	1000	<LOQ	Endosulfan-alpha <sup>2</sup>	12.22	30	2500	<LOQ
Aldicarb <sup>1</sup>	0.124	9.6	100	<LOQ	Malathion <sup>1</sup>	0.410	9.6	2000	<LOQ	Endosulfan-beta <sup>2</sup>	22.76	30	2500	<LOQ
Azoxystrobin <sup>1</sup>	0.683	9.6	3000	<LOQ	Metalaxyl <sup>1</sup>	0.749	9.6	3000	<LOQ	Etridiazole <sup>2</sup>	4.02	9.6	150	<LOQ
Bifenazate <sup>1</sup>	0.121	9.6	3000	<LOQ	Methiocarb <sup>1</sup>	0.099	9.6	100	<LOQ	Fensulfothion <sup>2</sup>	0.000794	9.6	10	<LOQ
Bifenthrin <sup>1</sup>	0.082	9.6	500	<LOQ	Methomyl <sup>1</sup>	0.121	9.6	100	<LOQ	Fenthion <sup>2</sup>	4.911315	9.6	10	<LOQ
Boscalid <sup>1</sup>	0.153	9.6	3000	<LOQ	methyl-Parathion <sup>1</sup>	3.065	9.6	100	<LOQ	Fluopyram <sup>2</sup>	1.12E-9	9.6	10	<LOQ
Captan <sup>1</sup>	8.966	48	3000	<LOQ	Mevinphos <sup>1</sup>	1.370	9.6	100	<LOQ	Iprodione <sup>2</sup>	0.105543	76.8	500	<LOQ
Carbaryl <sup>1</sup>	0.118	9.6	500	<LOQ	Myclobutanil <sup>1</sup>	0.571	9.6	3000	<LOQ	Kinoprene <sup>2</sup>	3.4	441.6	1250	<LOQ
Carbofuran <sup>1</sup>	0.178	9.6	100	<LOQ	Naled <sup>1</sup>	0.083	9.6	500	<LOQ	Novaluron <sup>2</sup>	0.000205	9.6	25	<LOQ
Chlorantraniliprole <sup>1</sup>	0.052	9.6	3000	<LOQ	Oxamyl <sup>1</sup>	0.123	9.6	500	<LOQ	Pirimicarb <sup>2</sup>	0.0000566	9.6	10	<LOQ
Chlordane <sup>1</sup>	3.121	9.6	100	<LOQ	Paclobutrazol <sup>1</sup>	0.123	9.6	100	<LOQ	Pyraclostrobin <sup>2</sup>	5.31E-7	9.6	10	<LOQ
Chlorfenapyr <sup>1</sup>	0.139	9.6	100	<LOQ	Permethrin <sup>1</sup>	0.718	9.6	1000	<LOQ	Resmethrin <sup>2</sup>	0.068013	9.6	50	<LOQ
Chlormequat Chloride <sup>1</sup>	0.783	9.6	3000	<LOQ	Phosmet <sup>1</sup>	0.301	9.6	200	<LOQ	Tebufenozide <sup>2</sup>	0.018121	9.6	10	<LOQ
Chlorpyrifos <sup>1</sup>	0.271	9.6	100	<LOQ	Piperonylbutoxide <sup>1</sup>	0.217	9.6	3000	<LOQ	Teflubenzuron <sup>2</sup>	0.01662	9.6	25	<LOQ
Clofentezine <sup>1</sup>	0.119	9.6	500	<LOQ	Prallethrin <sup>1</sup>	1.365	9.6	400	<LOQ	Tetrachlorvinphos <sup>2</sup>	0.839125	9.6	10	<LOQ
Coumaphos <sup>1</sup>	0.129	9.6	100	<LOQ	Propiconazole <sup>1</sup>	0.259	9.6	1000	<LOQ	Atrazine <sup>3</sup>	0.379918	9.6	9.6	<LOQ
Cyfluthrin <sup>1</sup>	7.730	48	1000	<LOQ	Propoxur <sup>1</sup>	0.147	9.6	100	<LOQ	Buprofezin <sup>3</sup>	1.66E-9	9.6	9.6	<LOQ
Cypermethrin <sup>1</sup>	0.887	9.6	1000	<LOQ	Pyrethrins <sup>1</sup>	0.256	1.4	1000	<LOQ	Deltamethrin <sup>3</sup>	0.492837	9.6	9.6	<LOQ
Daminozide <sup>1</sup>	1.797	9.6	100	<LOQ	Pyridaben <sup>1</sup>	0.059	9.6	3000	<LOQ	Diuron <sup>3</sup>	0.006862	9.6	9.6	<LOQ
Diazinon <sup>1</sup>	1.328	9.6	200	<LOQ	Spinetoram <sup>1</sup>	0.346	9.6	3000	<LOQ	Dodemorph <sup>3</sup>	6.47E-12	9.6	9.6	<LOQ
Dichlorvos <sup>1</sup>	0.465	9.6	100	<LOQ	Spinosad <sup>1</sup>	0.028	2.39	3000	<LOQ	Endosulfan sulfate <sup>3</sup>	0.88376	9.6	2500	<LOQ
Dimethoate <sup>1</sup>	0.366	9.6	100	<LOQ	Spiromesifen <sup>1</sup>	0.291	9.6	3000	<LOQ	Fenvalerate <sup>3</sup>	0.597752	9.6	9.6	<LOQ
Dimethomorph <sup>1</sup>	0.272	9.6	3000	<LOQ	Spirotetramat <sup>1</sup>	0.141	9.6	3000	<LOQ	Lambda Cyhalothrin <sup>3</sup>	0.116859	9.6	9.6	<LOQ
Ethoprophos <sup>1</sup>	0.192	9.6	100	<LOQ	Spiroxamine <sup>1</sup>	0.119	9.6	100	<LOQ	Methoprene <sup>3</sup>	1.148463	9.6	9.6	<LOQ
Etofenprox <sup>1</sup>	0.116	9.6	100	<LOQ	Tebuconazole <sup>1</sup>	0.000	9.6	1000	<LOQ	MGK-264 <sup>3</sup>	0.002068	7.4	7.4	<LOQ
Etoxazole <sup>1</sup>	0.570	9.6	1500	<LOQ	Thiacloprid <sup>1</sup>	0.397	9.6	100	<LOQ	Pentachloronitrobenzen (Quintozene)	1.817	9.6	200	<LOQ
Fenhexamid <sup>1</sup>	1.011	9.6	3000	<LOQ	Thiamethoxam <sup>1</sup>	0.104	9.6	1000	<LOQ	Phenothrin <sup>3</sup>	0.00000212	9.6	9.6	<LOQ
Fenoxycarb <sup>1</sup>	0.169	9.6	100	<LOQ	Trifloxystrobin <sup>1</sup>	0.088	9.6	3000	<LOQ	Pyriproxyfen <sup>3</sup>	0.0000958	9.6	9.6	<LOQ
Fenpyroximate <sup>1</sup>	0.139	9.6	2000	<LOQ	Allethrin <sup>2</sup>	0.472	9.6	100	<LOQ	Spirodiclofen <sup>3</sup>	0.373769	9.6	9.6	<LOQ
Fipronil <sup>1</sup>	0.605	9.6	100	<LOQ	Azadirachtin <sup>2</sup>	0.003	9.6	500	<LOQ	Tetramethrin <sup>3</sup>	0.0000992	9.6	9.6	<LOQ
			2000	<LOQ	Benzovindiflupyr <sup>2</sup>	0.013	9.6	10	<LOQ	Thiabendazole <sup>3</sup>	0.001251	9.6	9.6	<LOQ
			3000	<LOQ	Clothianidin <sup>2</sup>	0.000	9.6	25	<LOQ	Thiophanate-methyl <sup>3</sup>	0.000223	9.6	9.6	<LOQ

*Aixia Sun*  
Aixia Sun Lab Director/Principal Scientist  
D.H.Sc., M.Sc., B.Sc., MT (AAB)

**Definitions are found on page 1**

This report shall not be reproduced, without written approval, from ACS Laboratory. The results of this report relate only to the material or product analyzed. Test results are confidential unless explicitly waived otherwise. ACS Laboratory is accredited to the ISO/IEC 17025:2017 Standard. The tests and/or calibrations marked with an "\*" are not ISO/IEC 17025:2017 accredited test results. This facility meets the human health and food safety sanitation requirements of the Kentucky Cabinet for Health and Family Services as documented by KYCHFS.

